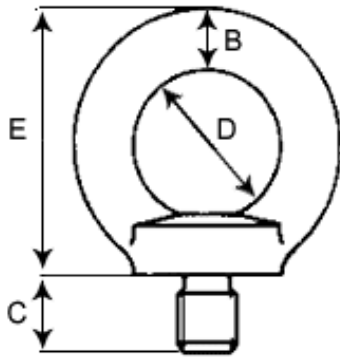






CANCAMOS ALTA RESISTENCIA– Cáncamos CyE



METRICO



UNC

Rosca		SWL en kg	SWL en kg	Dimensiones en mm			
Métricos	UNC			B	C	D	E
M6	1/4"	200	100	6	13	16	31
M8	5/16"	400	200	8	13	20	36
M10	3/8"	500	250	10	17	25	45
M12	1/2"	800	400	12	20.5	30	53
M16	5/8"	2000	1000	14	27	35	62
M18		2400	1200	16	30	40	71
M20	3/4"	3,000	1,500	16	30	40	71
M24	1"	4,000	2,000	20	36	50	90
M27		4,000	2,000	24	45	60	109
M30	1 1/4"	6,000	3,000	24	45	60	109
M33		6,000	3,000	28	54	70	128
M36	1 1/2 "	8,000	4,000	28	54	70	128
M42		12,000	6,000	32	63	80	147